



Universal Definition of Myocardial Infarction

Guidelines for the Application of the Universal Definition of Myocardial Infarction



Organisation of the Global Task Force

Auspices of ESC- ACCF - AHA - WHF

Executive Group

ECG WG

Biomarker WG

Imaging WG

Clin. Invest. WG

Intervention WG

Global Perspective WG

Plenary Session

Implementation WG

Editing Group

Presentation

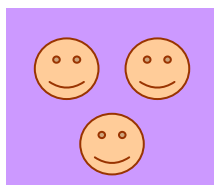
Publication

Implementation



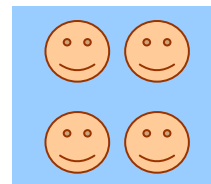
Compositions of the Working Groups

Executive Group



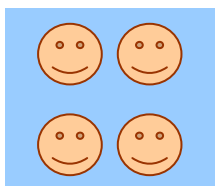
K Thygesen DK
JS Alpert US
HD White NZ

Biomarker Group



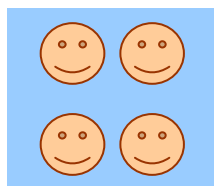
AS Jaffe US
FS Apple US
M Galvani IT
HA Katus DE
LK Newby US
J Ravkilde DK

Imaging group



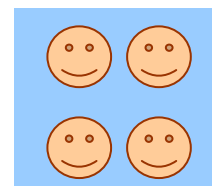
R Underwood UK
JJ Bax NL
GA Beller US
R Bonow US
EEVD Wall NL

ECG Group



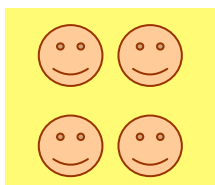
B Chaitman US
PM Clemmensen DK
M Dellborg SE
H Hod IL
P Porela FI

Intervention Group



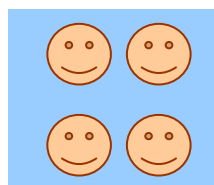
J-P Bassand FR
W Wijns BE
TB Ferguson US
PG Steg FR
BF Uretsky US
DO Williams US

Global Perspective Group



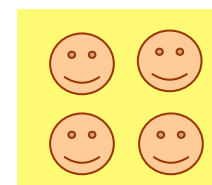
PA Poole-Wilson UK
EP Garfunkel AR
J-L Lopez-Sendon ES
J-R Zhu China
P Pais India
S Mendis CH

Investigational Group



PW Armstrong CA
EM Antman US
KA Fox UK
CW Hamm DE
EM Ohman US
ML Simoons NL

Implementation Group



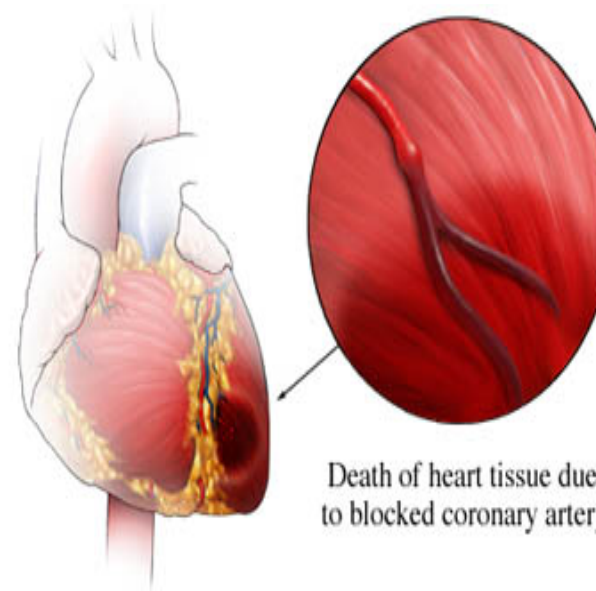
LC Wallentin SE
F Fernandez-Avilés ES
KM Fox UK
AN Parkhomenko UA
SG Priori IT
M Tendera PL
L-M Voipio-Pulkki FI



Definition of Myocardial Infarction

Pathology

Acute myocardial infarction is defined as myocardial cell death due to prolonged myocardial ischemia





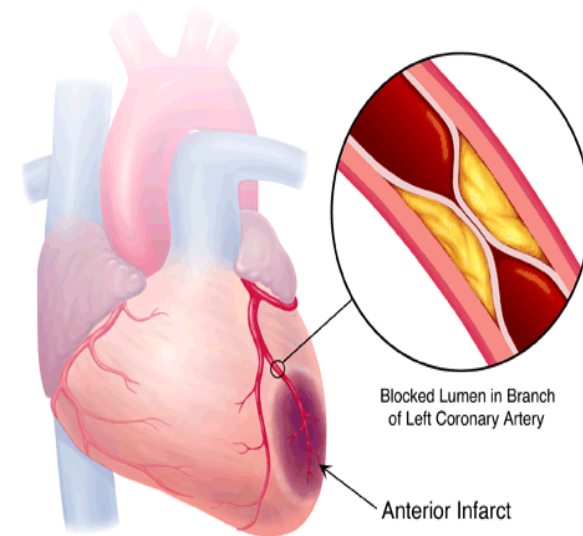
Classification of Myocardial Infarction

- Type 1** Spontaneous myocardial infarction related to ischemia due to a primary coronary event such as plaque erosion or rupture, fissuring or dissection
- Type 2** Myocardial infarction secondary to ischemia due to imbalance between oxygen demand and supply e.g. coronary spasm, anemia, or hypotension
- Type 3** Sudden cardiac death with symptoms of ischemia, accompanied by new ST elevation or LBBB, or verified coronary thrombus by angiography or autopsy, but death occurring before blood samples could be obtained
- Type 4a** Myocardial infarction associated with PCI
- Type 4b** Myocardial infarction associated with verified stent thrombosis
- Type 5** Myocardial infarction associated with CABG



Myocardial Infarction Type 1

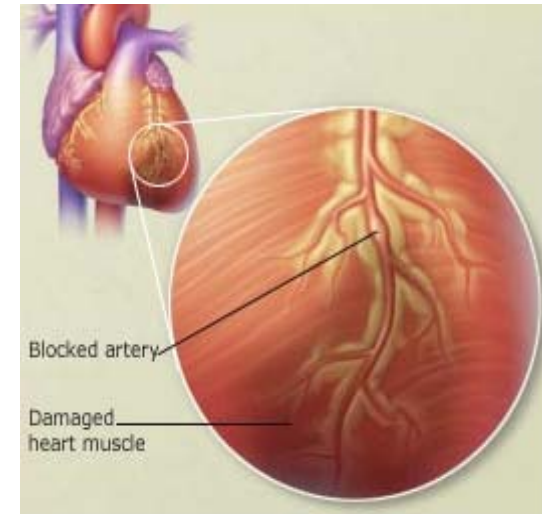
Spontaneous myocardial infarction related to ischemia due to a primary coronary event such as plaque erosion, fissuring, or dissection





Myocardial Infarction Type 2

Myocardial infarction secondary to ischemia due to either increased oxygen demand or decreased supply e.g. spasm, anemia, arrhythmia, or hypotension





Criteria for Acute Myocardial Infarction Type 1 and Type 2

Detection of rise and/or fall of cardiac biomarkers (preferably troponin) with at least one value above the 99th percentile of the upper reference limit together with evidence of ischemia with at least one of the following:

- **Symptoms of ischemia**
- **ECG changes of new ischemia (new ST-T changes or new LBBB)**
- **Development of pathological Q waves in the ECG**
- **Imaging evidence of new loss of viable myocardium or new regional wall motion abnormality**



Biomarkers for Detection of Myocardial Infarction



Preferably

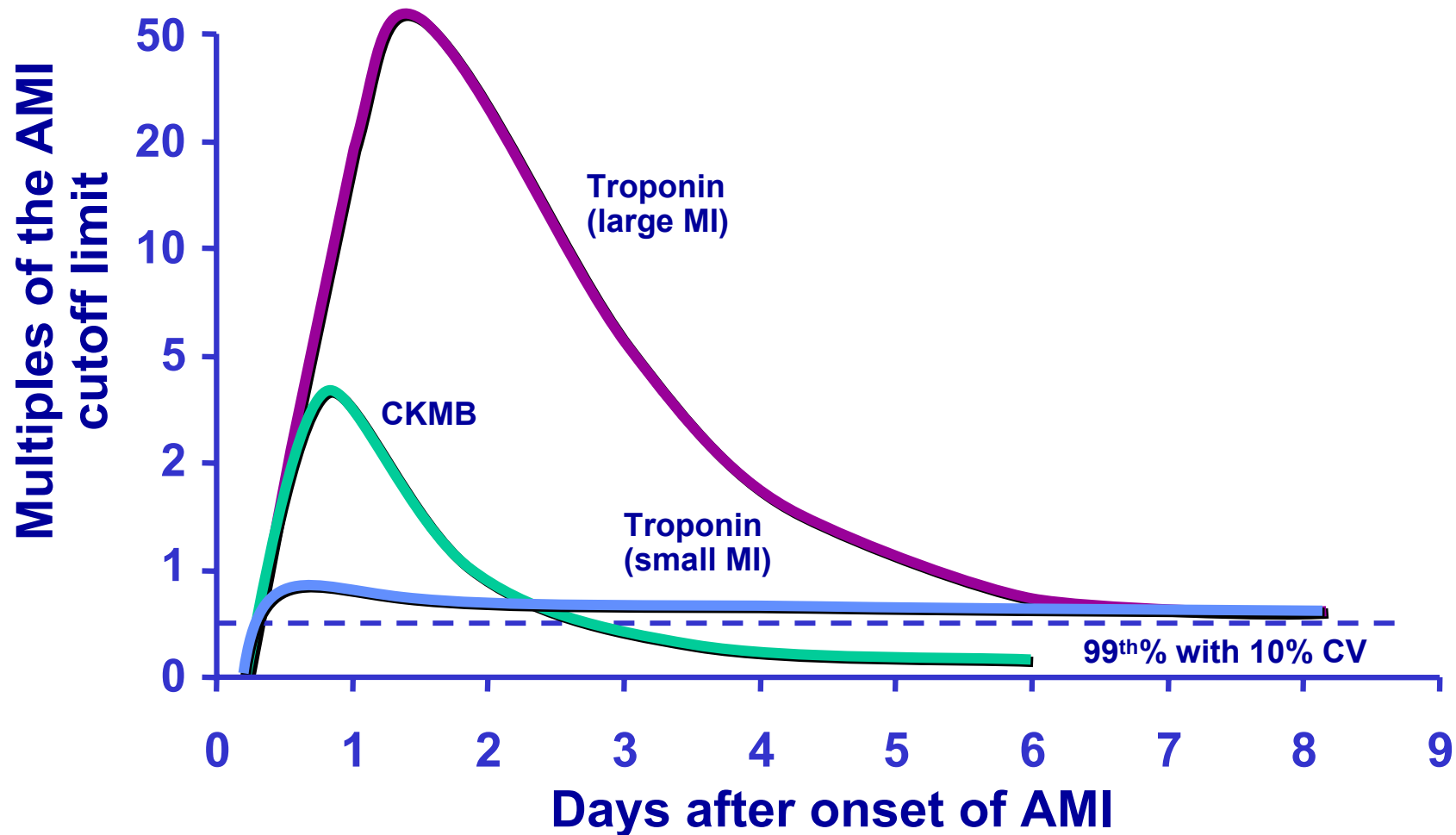
Detection of rise and/or fall of Troponin (I or T) with at least one value above the 99th percentile of the upper reference limit measured with a coefficient of variation $\leq 10\%$

When Troponin is not available

Detection of rise and/or fall of CKMB mass with at least one value above the 99th percentile of the upper reference limit measured with a coefficient of variation $\leq 10\%$



Appearance of Biomarkers in Blood after Onset of Myocardial Infarction





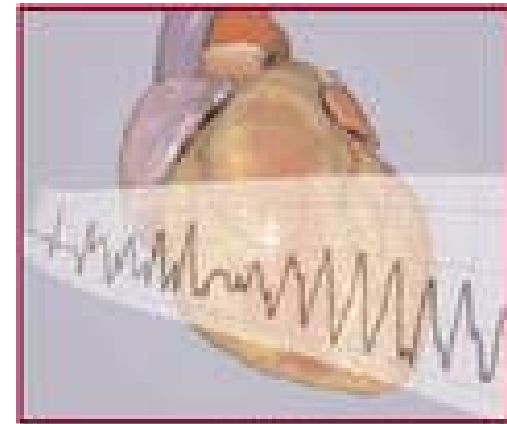
Elevations of Troponin in the Absence of Overt Ischemic Heart Disease

- Cardiac contusion, or other trauma including surgery, ablation, pacing etc
- Congestive heart failure – acute and chronic
- Aortic dissection, aortic valve disease
- Hypertrophic cardiomyopathy
- Tachy- or bradyarrhythmias, or heart block
- Apical ballooning syndrome
- Rhabdomyolysis with cardiac injury
- Pulmonary embolism, severe pulmonary hypertension
- Renal failure
- Acute neurological disease, including stroke, or subarachnoid hemorrhage
- Infiltrative diseases, e.g., amyloidosis, hemochromatosis, sarcoidosis or scleroderma
- Inflammatory diseases, e.g., myo/pericarditis or myocardial extension of endocarditis
- Drug toxicity or toxins
- Critically ill patients, especially with respiratory failure, or sepsis
- Burns, especially if affecting > 30% of body surface area
- Extreme exertion



Myocardial Infarction Type 3

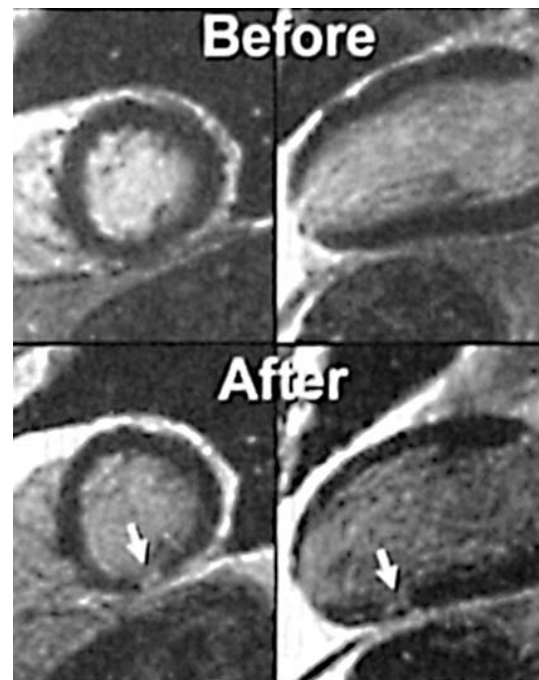
Sudden cardiac death, often with symptoms of myocardial ischemia, accompanied by new ST elevation or new LBBB, or verified coronary thrombus by angiography and/or autopsy, but death before blood samples are obtained, or before appearance of biomarkers in blood





Myocardial Infarction Type 4a

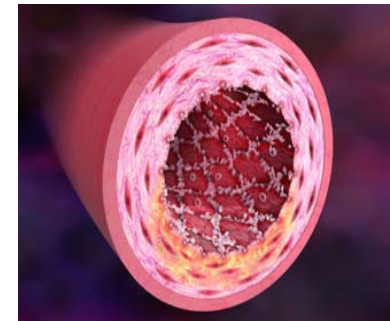
PCI-related increase of biomarkers (assuming a normal troponin baseline) $> 3 \times 99^{\text{th}}$ percentile of the upper reference limit (URL) is by convention defined as myocardial infarction





Myocardial Infarction Type 4b

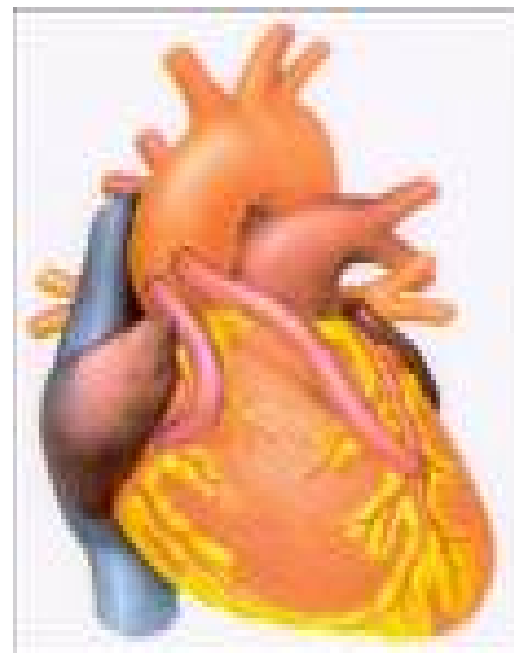
Stent-thrombosis, documented by coronary angiography or autopsy and in addition, meeting the criteria for spontaneous myocardial infarction





Myocardial Infarction Type 5

CABG-related increase of biomarkers $> 5 \times 99^{\text{th}}$ percentile URL plus either new Q waves or new LBBB, or angiographically verified new graft or native coronary occlusion, or imaging evidence of new loss of viable myocardium is by convention defined as myocardial infarction





Criteria for Prior Myocardial Infarction

- **Development of new pathological Q waves with or without symptoms**
- **Imaging evidence of a region of loss of viable myocardium that is thinned and fails to contract, in the absence of a non-ischemic cause**
- **Pathological findings post-mortem of a healed or healing myocardial infarction**



ECG Manifestations of Acute Myocardial Ischemia

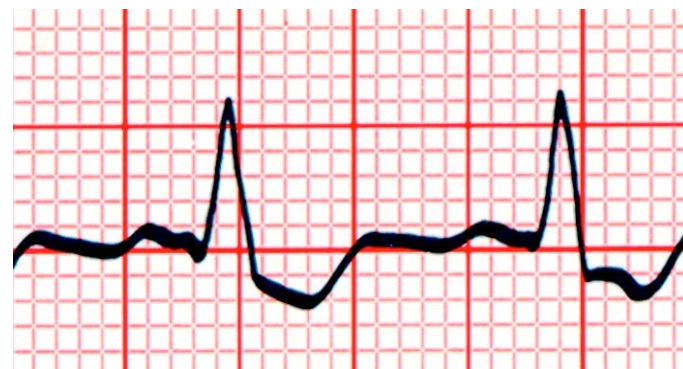
New ST elevation at the J point ≥ 0.2 mV in men or ≥ 0.15 mV in women in V_2 - V_3 ; and/or ≥ 0.1 mV in other leads in both genders





ECG Manifestations of Acute Myocardial Ischemia

New ST depression, horizontal or down-sloping ≥ 0.05 mV in two contiguous leads; and/or T inversion ≥ 0.1 mV in two leads with prominent R wave or R/S ratio > 1





ECG Manifestations of Prior Myocardial Infarction

Any Q wave in V_2 - V_3 ≥ 0.02 sec or QS complex in V_2 - V_3 ; or Q-wave ≥ 0.03 sec and ≥ 0.1 mV deep or QS complex in any two contiguous leads of I, aVL, V_6 ; V_4 - V_6 ; II, III, aVF





ECG Pitfalls in Diagnosing Myocardial Infarction

False positives

- Benign early repolarization
- LBBB
- Pre-excitation
- Brugada syndrome
- Peri-/myocarditis
- Pulmonary embolism
- Subarachnoid hemorrhage
- Metabolic disturbances such as hyperkalemia
- Failure to recognize normal limits for J-point displacement
- Lead transposition or use of modified leads configuration
- Cholecystitis

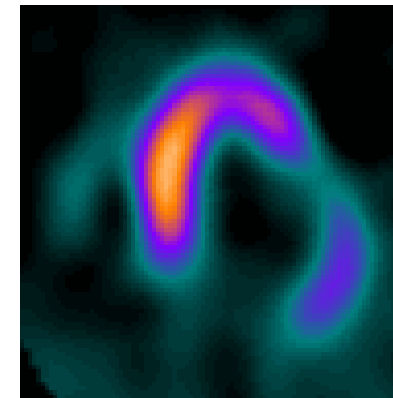
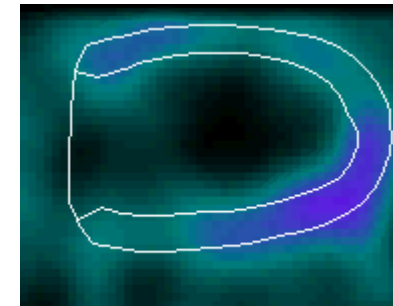
False Negatives

- Prior Q waves and/or persistent ST-elevation
- Paced rhythm
- LBBB



Imaging Evidence of Acute Myocardial Infarction

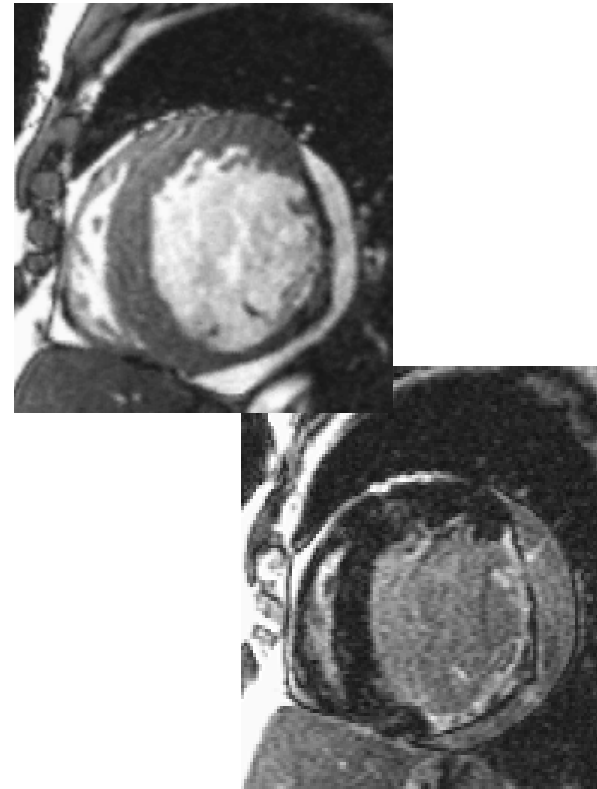
Imaging evidence of new loss of viable myocardium or new regional wall motion abnormality with biomarker criteria for myocardial infarction in the absence of a non-ischemic cause





Imaging Evidence of Prior Myocardial Infarction

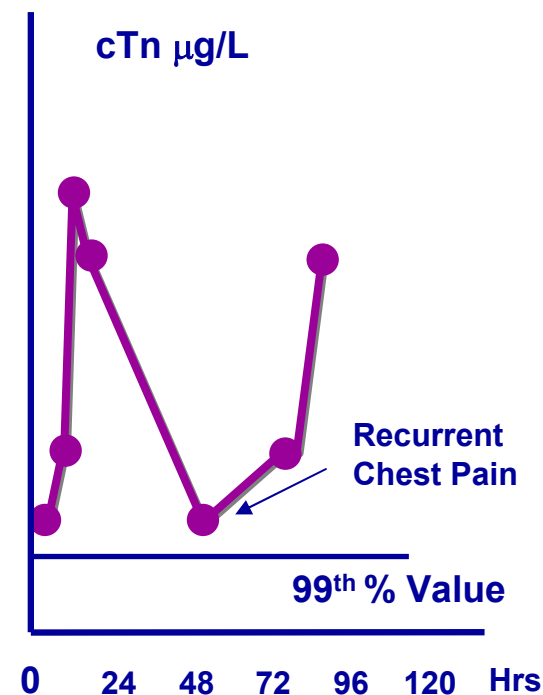
Imaging evidence of a region of loss of viable myocardium that is thinned and fails to contract in the absence of a non-ischemic cause





Criteria for Diagnosing Reinfarction

Recurrent ischemic symptoms and/or ECG changes following the initial infarction together with an increase $\geq 20\%$ of biomarkers (preferably troponin) measured after the recurrent event with at least one value above the 99th percentile of the reference range





Tabulation of Myocardial Infarction by Multiples of the Decision Limit

Classification of the different types of myocardial infarction according to multiples of the 99th percentile URL of the applied cardiac biomarker

Multiples X 99%	MI Type 1 (spontaneous)	MI Type 2 (secondary)	MI Type 3* (sudden death)	MI Type 4a** (PCI)	MI Type 4b (stent thrombosis)	MI Type 5** (CABG)	Total Number
1-2 X							
2-3 X							
3-5 X							
5-10 X							
> 10 X							
Total number							

*Biomarkers are not available for this type of myocardial infarction since the patients expired before biomarker determination could be performed.

**For the sake of completeness, the total distribution of biomarker values should be reported. The hatched areas represent biomarker elevations below the decision limit used for these types of myocardial infarction.



Reporting Myocardial Infarction by Types in Clinical Trials

Sample clinical trial tabulation of randomized patients by types of myocardial infarction

Types of MI	Treatment A Number of patients	Treatment B Number of patients
MI Type 1		
MI Type 2		
MI Type 3		
MI Type 4a		
MI Type 4b		
MI Type 5		
Total number		